



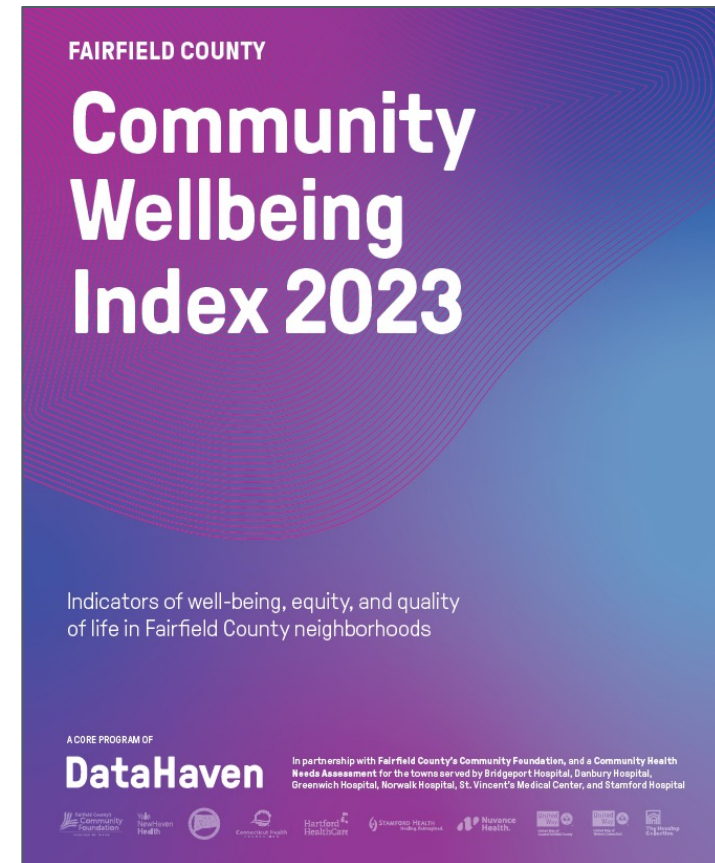
# 2023 Fairfield County Community Wellbeing Index

Dr. Tanya A. Hills

January 24, 2024

# AGENDA

- Overview of FCCF
- CWI Background & Context
- Key Findings
  - Wellbeing & Equity
  - Housing
  - Economic Opportunity
  - Education
  - Health
- Reflection



## OUR MISSION

---

Partnering with our community to create a Fairfield County where every person has an equitable opportunity to thrive.

# ABOUT US

## Fairfield County-wide Focus

23 towns & cities

Population: ~1 million

Founded in  
**1992**

Grants Distributed  
**\$390**  
million+

Charitable Assets

**\$255**  
million

# 2023 IMPACT BY THE NUMBERS

## GRANTS TO NONPROFITS

**\$22.9  
million**

in total grants



810 grants totaling

**\$12.2  
million**

to nonprofits that serve  
Fairfield County



**\$3.3  
million**

in competitive grants  
to 151 nonprofits



## SCHOLARSHIPS

**\$1.6 million**

to 431 students across Fairfield County\*



# OUR FOCUS AREAS

---



**ECONOMIC  
OPPORTUNITY**



**EDUCATION AND  
CAREER DEVELOPMENT**



**HOUSING OPPORTUNITY**

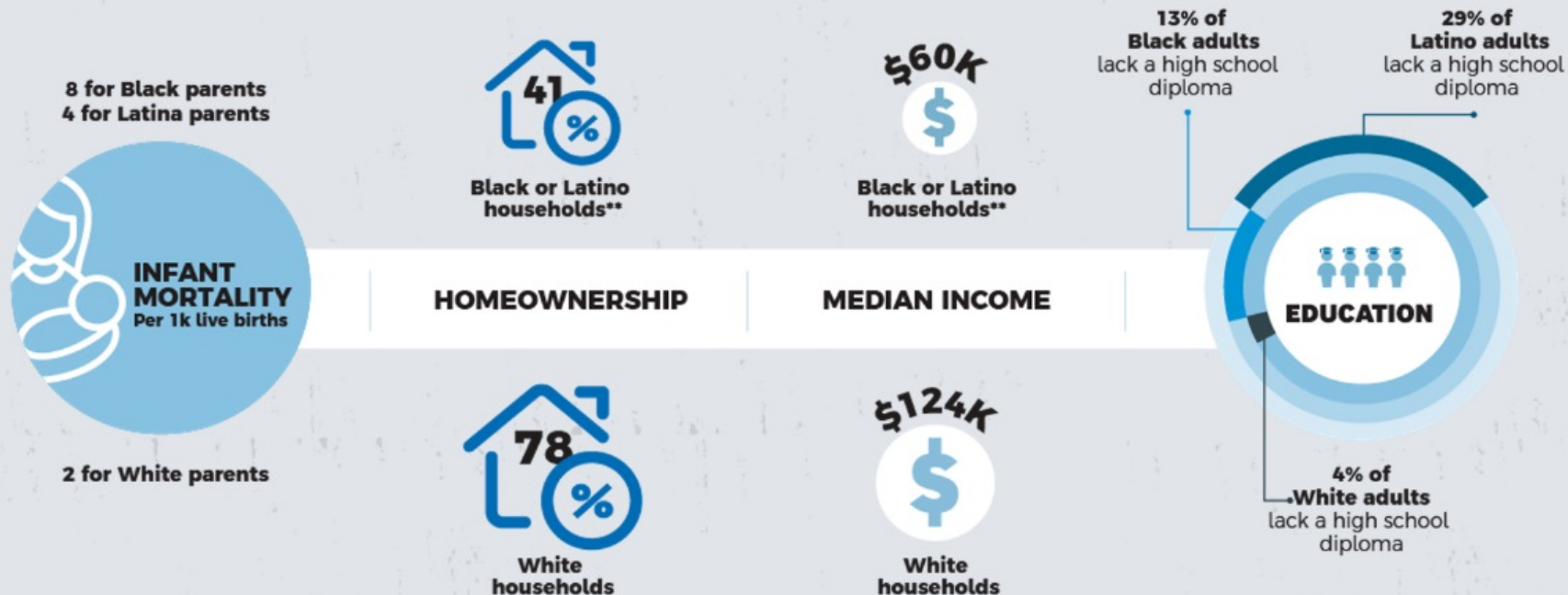


**HEALTH EQUITY**

# THE CHALLENGES

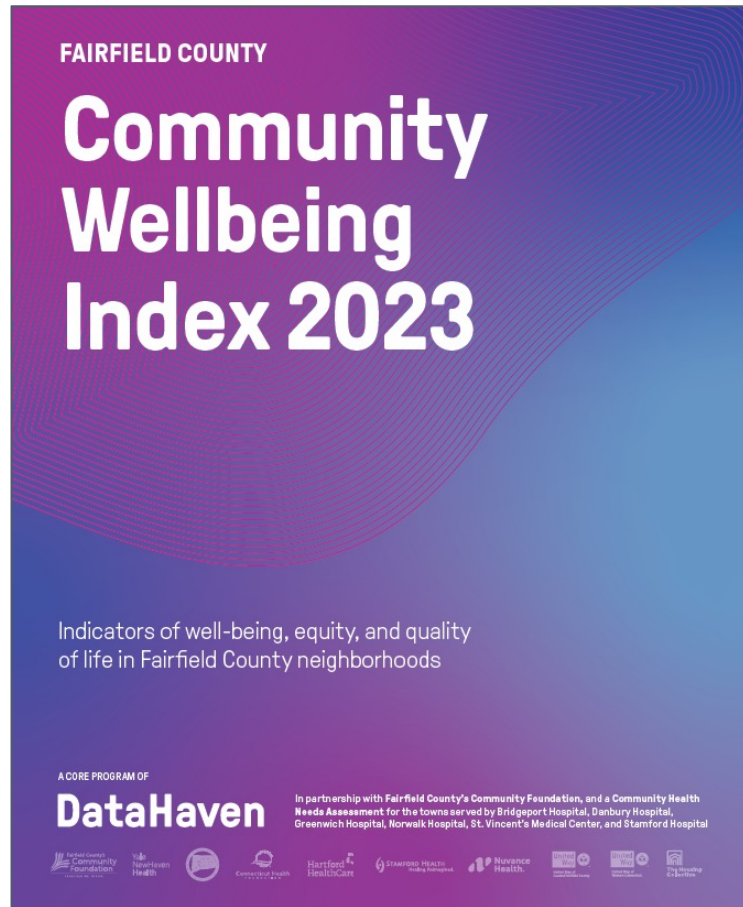
## What is the state of equity in Fairfield County?

Research consistently shows that in Fairfield County, your race and ethnicity affect how healthy you are, how much money you make, where you can afford to live, and whether you can go to a good school. This is the result of unfair laws and systems.

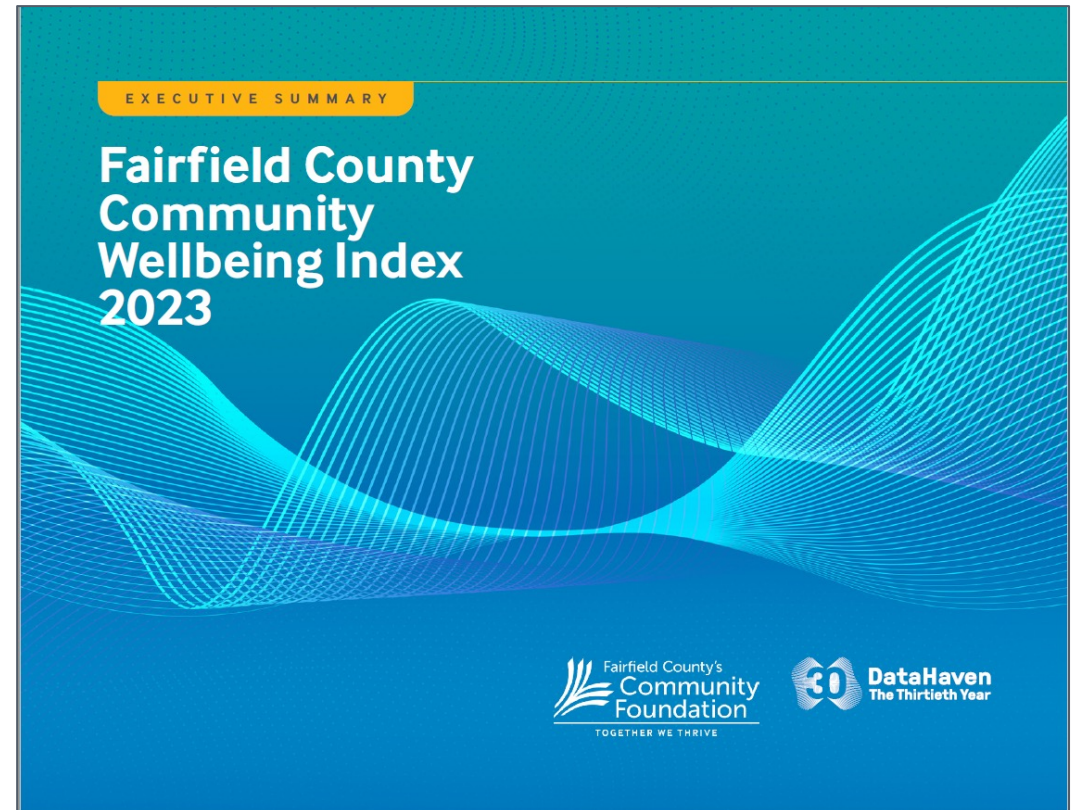


# COMMUNITY WELLBEING INDEX

## FULL REPORT:



## EXECUTIVE SUMMARY:





## **WELLBEING & EQUITY**

# QUALITY OF LIFE RANKINGS

TABLE 1A

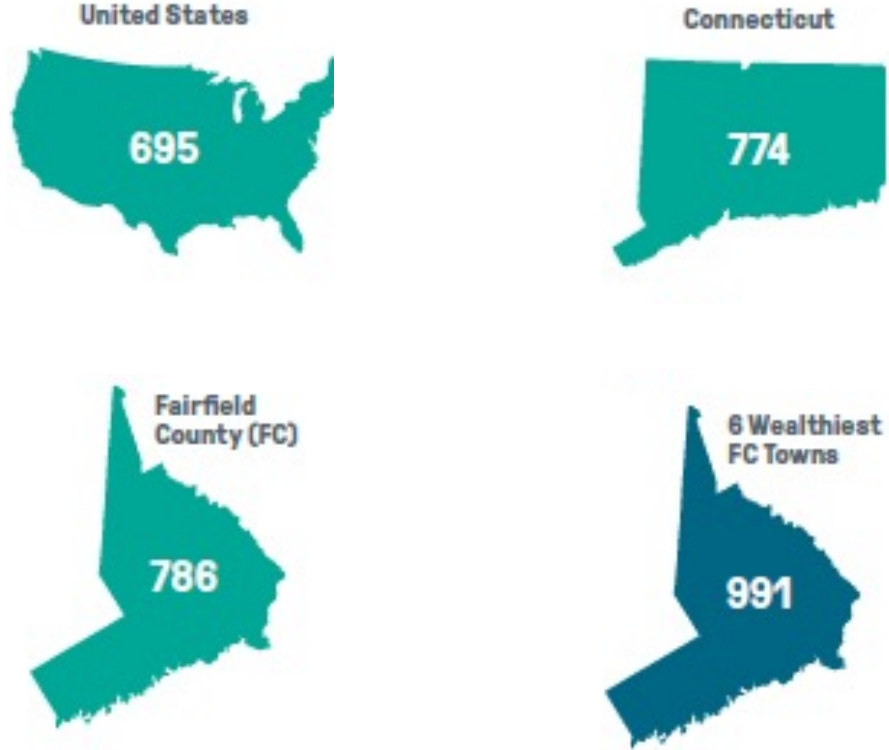
## Quality of life rankings for New England and New York

### SELECTED STATE RANKINGS AND AVERAGE PLACEMENT FOR QUALITY OF LIFE INDICES

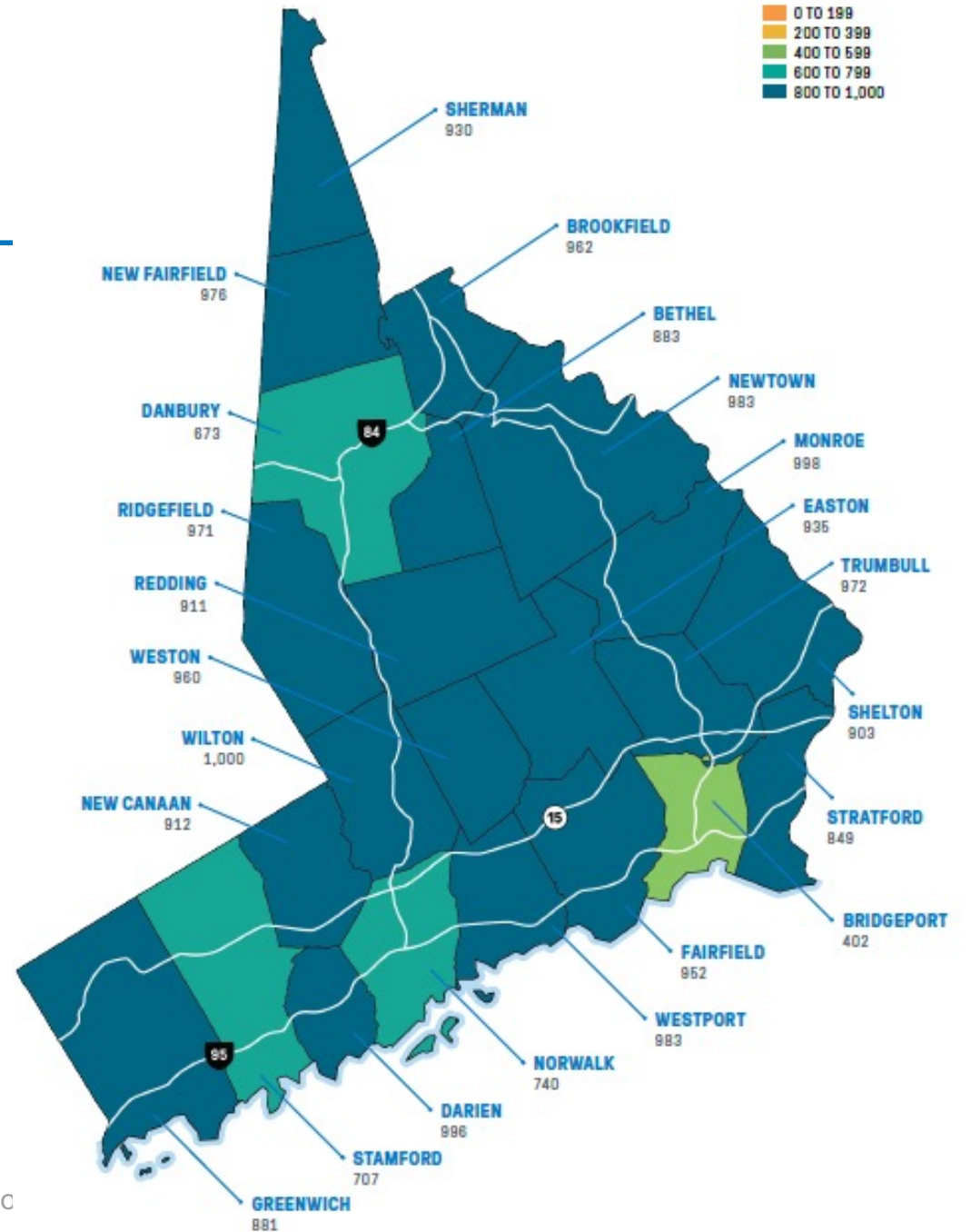
REPORT [YEAR] - PUBLISHER	DESCRIPTION	CT	ME	MA	NH	NY	RI	VT
Measure of America [2018] - Social Science Research Council	The distribution of well-being and opportunity in three basic dimensions: health, access to knowledge, and living standards.	3	29	2	10	6	13	17
Opportunity Index [2019] - Opportunity Nation	A composite measure that draws upon important economic, educational, health, and community-related indicators of opportunity.	10	11	4	8	14	20	2
Quality Counts [2021] - Education week	Measures the education of states on Chance for Success, School Finance and K-12 Achievement.	3	16	2	9	8	13	6
State Innovation Index [2020] - Bloomberg	Rank based on research and development intensity, productivity, clusters of companies in technology, STEM jobs, residents with degrees in science and engineering disciplines and patent activity.	4	37	2	9	14	19	24
America's Health Rankings [2021] - United Health Foundation	Measures social and economic factors, physical environment, clinical care, behaviors and health outcomes.	6	8	2	1	22	12	3
Prosperity Now Outcome Ranks [2020] - Prosperity Now	Assesses states on the financial security and economic opportunity of households; final score incorporates the state's racial disparity.	13	20	4	6	27	24	2
Number of times state is ranked among the top 10 states		5	1	6	6	2	0	4
Average placement		7	20	3	7	15	17	9

# COMMUNITY INDEX SCORES

FIGURE 1A  
**Community Index scores vary by town within Fairfield County**  
 INDEX SCORE BY TOWN, 2020



Source: [Fairfield County CWI 2023](#) (p. 8)



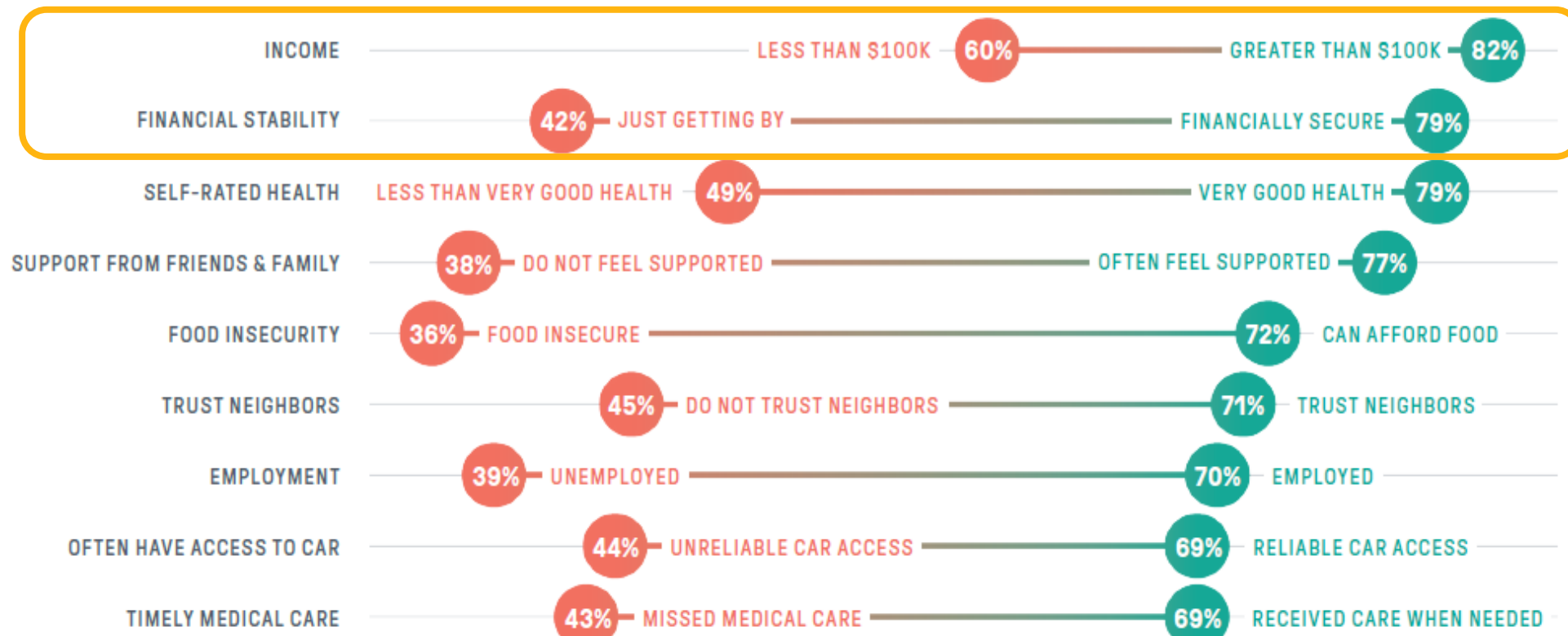
Fairfield County's Community Fo

# LIFE SATISFACTION

FIGURE 1D

## Many positive experiences and resources, including having a high income, correspond to higher life satisfaction

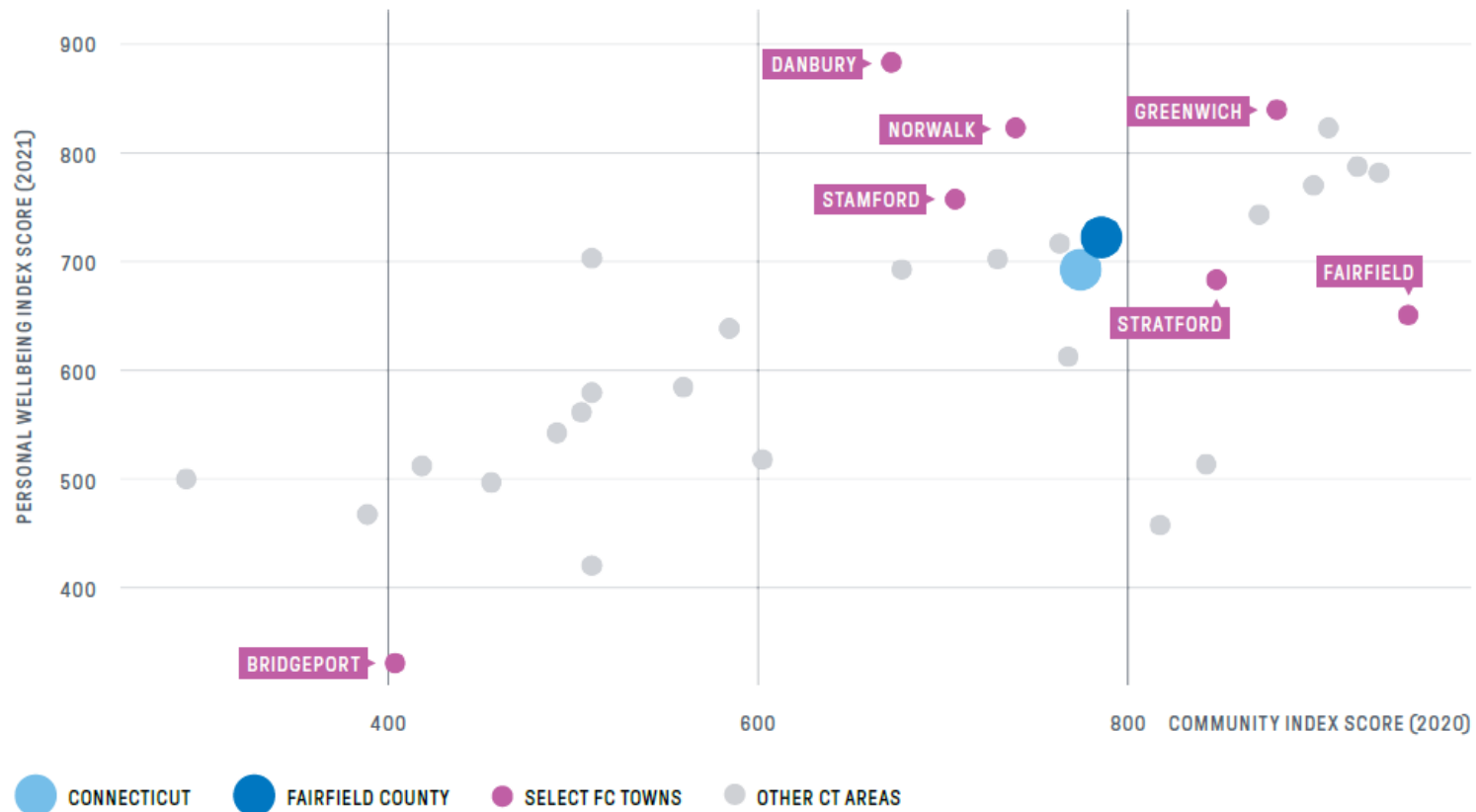
SHARE OF ADULTS REPORTING BEING SATISFIED WITH LIFE BY SELECT EXPERIENCES, CONNECTICUT, 2015–2021



# WELLBEING & EQUITY

FIGURE 1B

## Personal well-being tends to improve with overall community well-being PERSONAL WELLBEING INDEX (2021) VERSUS COMMUNITY INDEX SCORES (2020)



# DEMOGRAPHICS

# FAIRFIELD COUNTY DEMOGRAPHICS

**4%**  
pop.  
growth



**39%**  
BIPOC

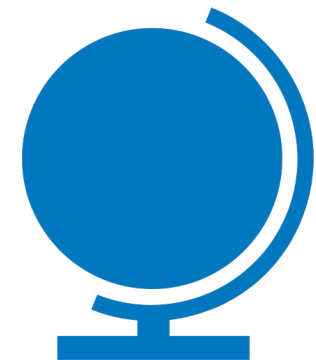


by age  
group

<18 years  
**47%**

65+ years  
**21%**

**22%**  
foreign-born



# FAIRFIELD COUNTY DEMOGRAPHICS

FIGURE 2G|

## Unlike other groups, white residents mostly live near other white people

AVERAGE RACIAL/ETHNIC MAKEUP OF A RESIDENT'S NEIGHBORS, FAIRFIELD COUNTY, 2020

Neighborhood where the average .... lives



WHITE RESIDENT

BLACK RESIDENT

LATINO RESIDENT

ASIAN RESIDENT

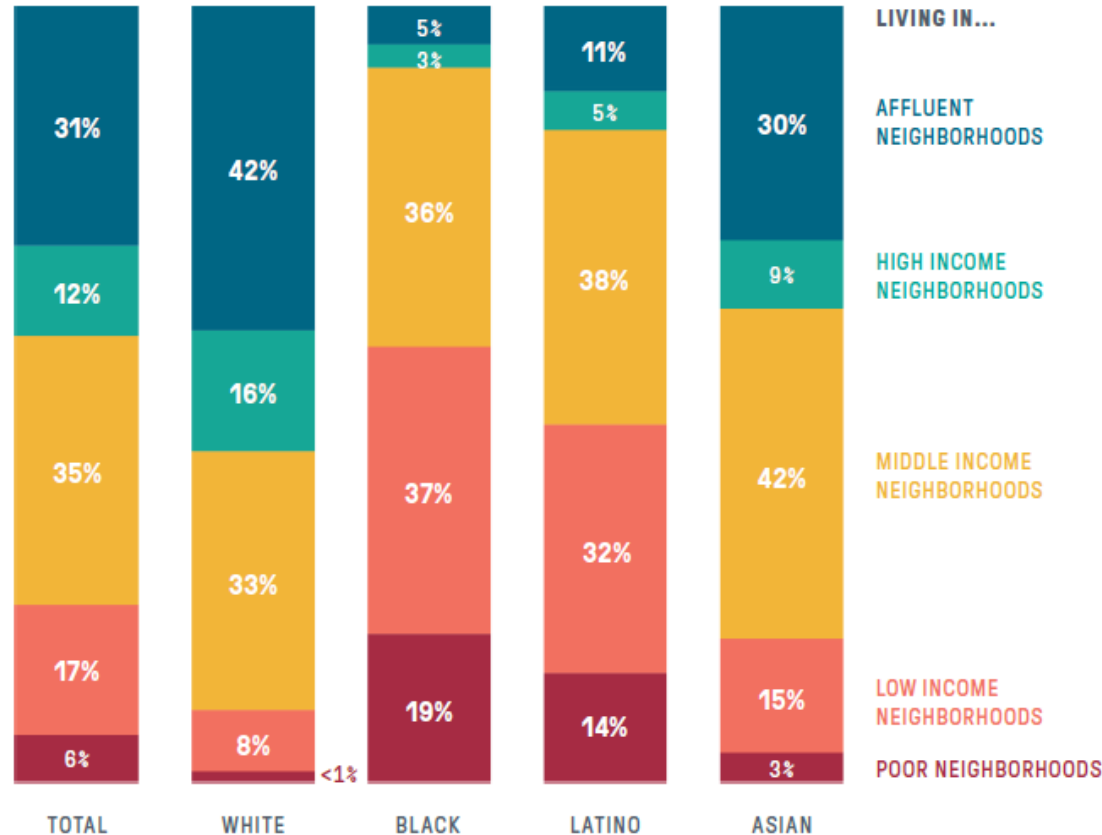


# FAIRFIELD COUNTY DEMOGRAPHICS

FIGURE 2C

**White residents are over 3 times more likely to live in high-income or affluent neighborhoods than Black and Latino residents**

SHARE OF POPULATION BY NEIGHBORHOOD INCOME LEVEL, FAIRFIELD COUNTY, 2020



BRACKET	RATIO TO STATE INCOME	AVERAGE HOUSEHOLD INCOME
Affluent	1.50x or higher	\$259,017
High income	1.25x to 1.49x	\$155,478
Middle income	0.75x to 1.24x	\$112,829
Low income	0.50x to 0.74x	\$73,243
Poor	Less than 0.49x	\$46,769

# HOUSING

# HOME OWNERSHIP

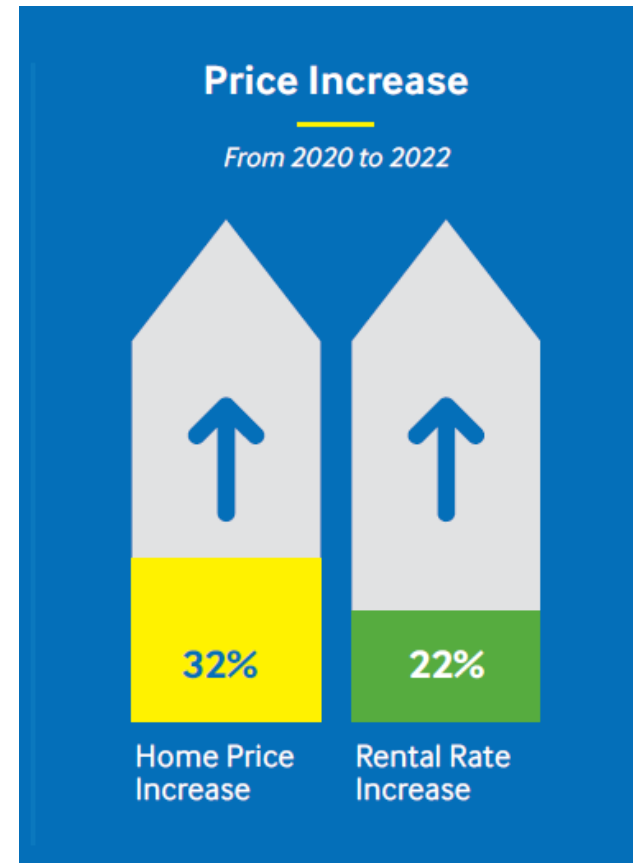
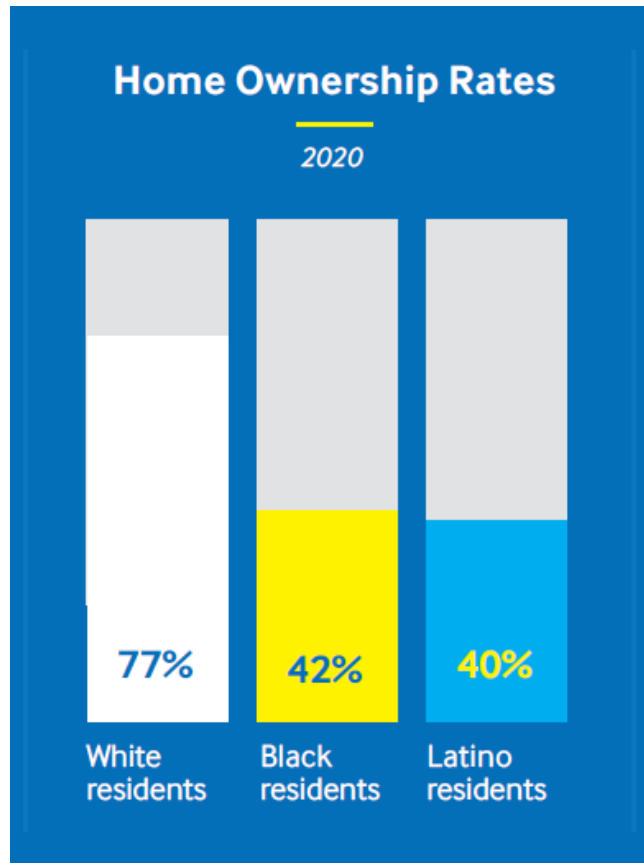
TABLE 4A

## Homeownership

HOMEOWNERSHIP RATE, TOTAL AND BY RACE/ETHNICITY OF HEAD OF HOUSEHOLD, FAIRFIELD COUNTY, 2010–2020

LOCATION	TOTAL		WHITE		BLACK		LATINO		ASIAN	
	2010	2020	2010	2020	2010	2020	2010	2020	2010	2020
United States	67%	64%	74%	72%	46%	42%	49%	49%	59%	60%
Connecticut	69%	66%	77%	76%	41%	40%	35%	36%	56%	59%
<b>Fairfield County</b>	<b>71%</b>	<b>67%</b>	<b>81%</b>	<b>77%</b>	<b>43%</b>	<b>42%</b>	<b>39%</b>	<b>40%</b>	<b>59%</b>	<b>65%</b>
Bridgeport	45%	42%	62%	56%	42%	40%	33%	36%	47%	48%
Danbury	63%	57%	73%	68%	46%	38%	32%	33%	62%	63%
Fairfield	85%	83%	86%	84%	N/A	78%	72%	75%	87%	70%
Greenwich	73%	67%	79%	72%	N/A	N/A	32%	38%	47%	64%
Norwalk	66%	57%	77%	69%	40%	44%	43%	34%	50%	55%
Stamford	56%	50%	71%	62%	33%	29%	32%	29%	44%	54%
Stratford	82%	79%	86%	84%	64%	65%	69%	70%	86%	75%

# HOME OWNERSHIP & PRICES



# HOUSING COST BURDEN & SUPPLY

## Cost Burden Rates

2020

Individuals who spend more than 30% of their monthly income towards housing costs are considered cost-burdened.

Latino renters

61%

Black renters

59%

White renters

45%

## Estimated Affordable Housing Shortage



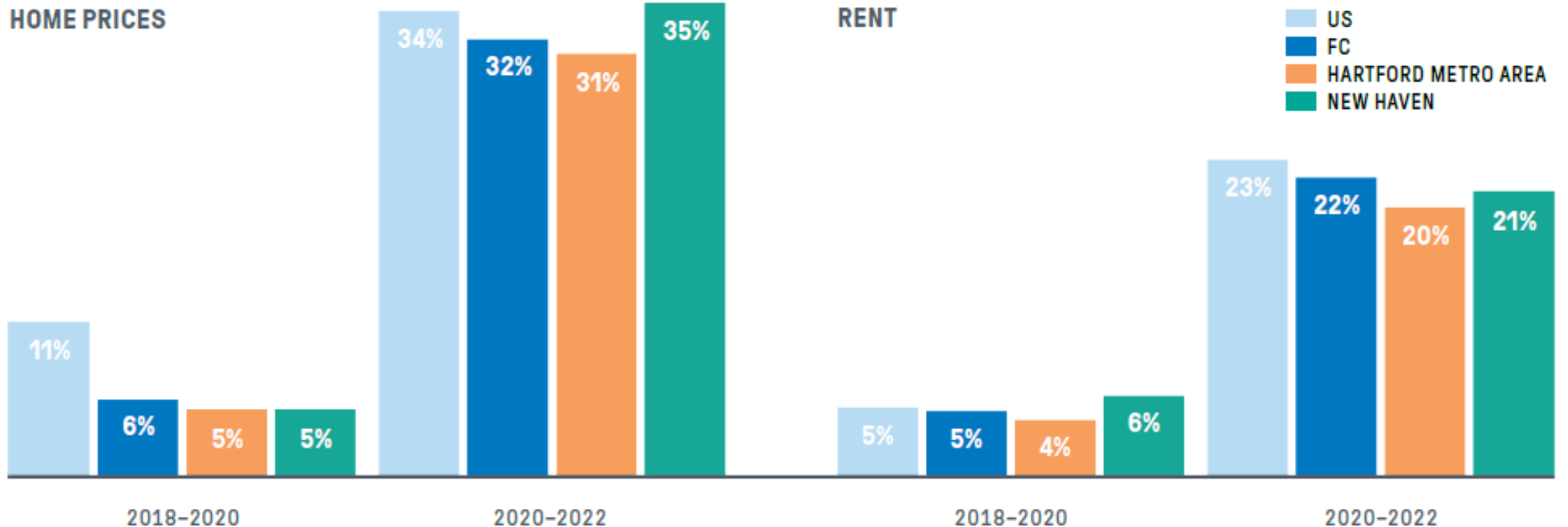
25,000  
units

# HOUSING PRICES

FIGURE 4D

## Housing prices have surged since the start of the pandemic

PERCENT CHANGE IN AVERAGE HOME PRICES AND MONTHLY RENT BY COUNTY, 2018-2022

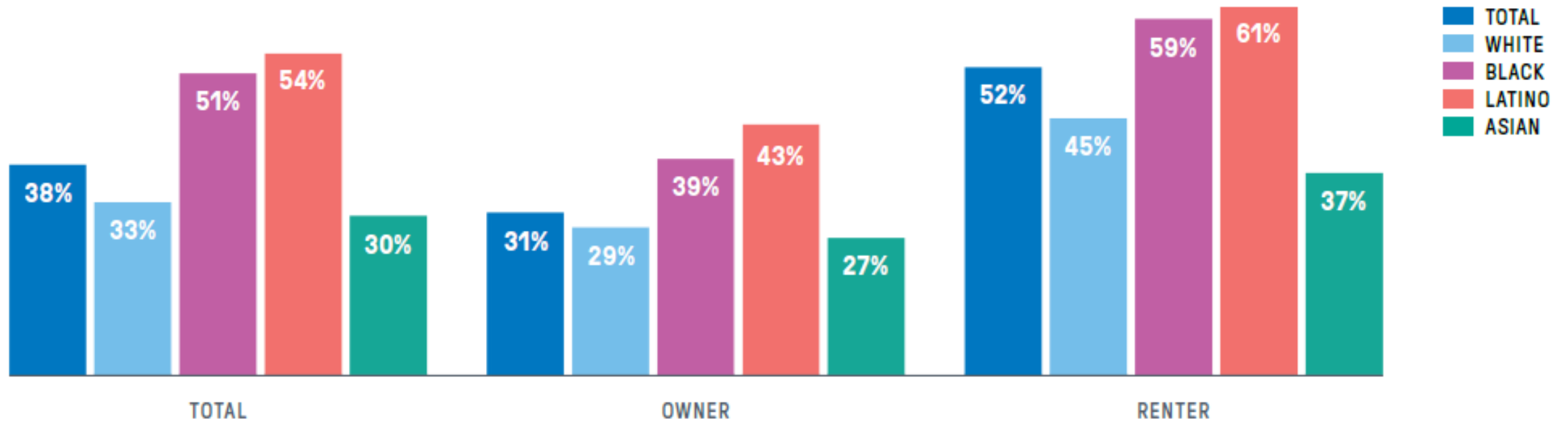


# HOUSING COST-BURDEN

FIGURE 4E

## High shares of Black and Latino renters are burdened by housing costs

COST-BURDEN RATES BY TENURE AND RACE/ETHNICITY OF HEAD OF HOUSEHOLD, FAIRFIELD COUNTY, 2020



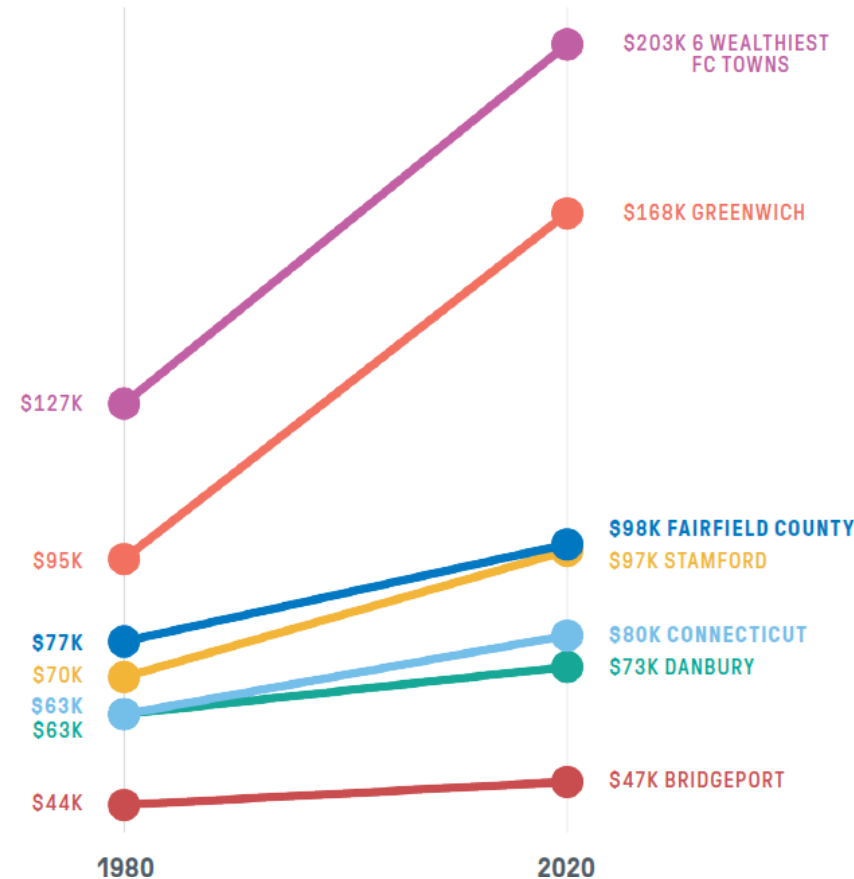
# ECONOMIC OPPORTUNITY



# INCOME SEGREGATION

## Median incomes have risen steeply in higher-income towns

MEDIAN HOUSEHOLD INCOME IN 2020 DOLLARS, FAIRFIELD  
COUNTY, 1980-2020



# WAGE GAP

FIGURE 6B

## Wage gaps are larger by race/ethnicity than by sex

MEDIAN EARNINGS BY SEX AND RACE/ETHNICITY, FAIRFIELD COUNTY ADULTS AGES 25+ WORKING FULL-TIME, 2020

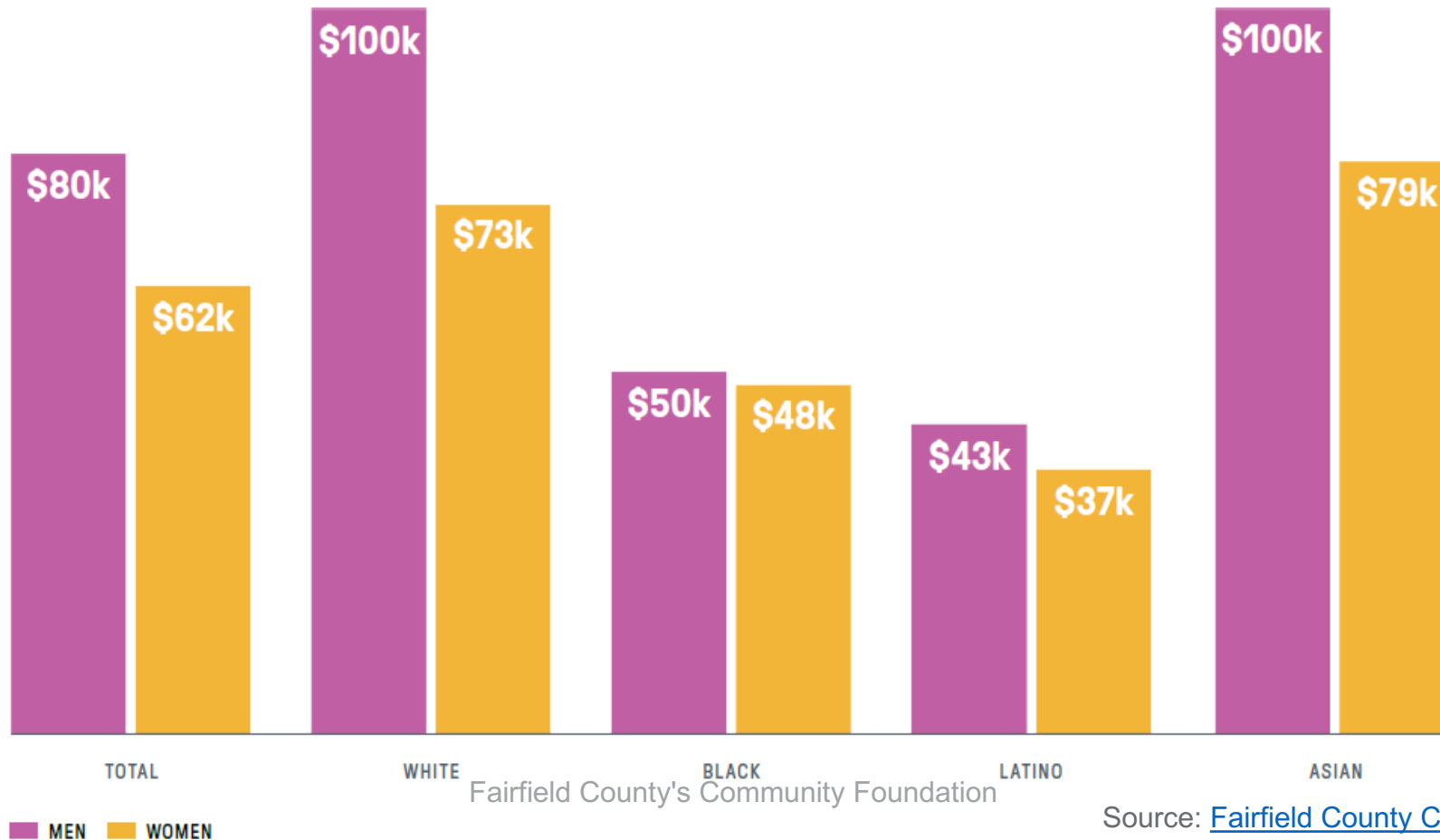
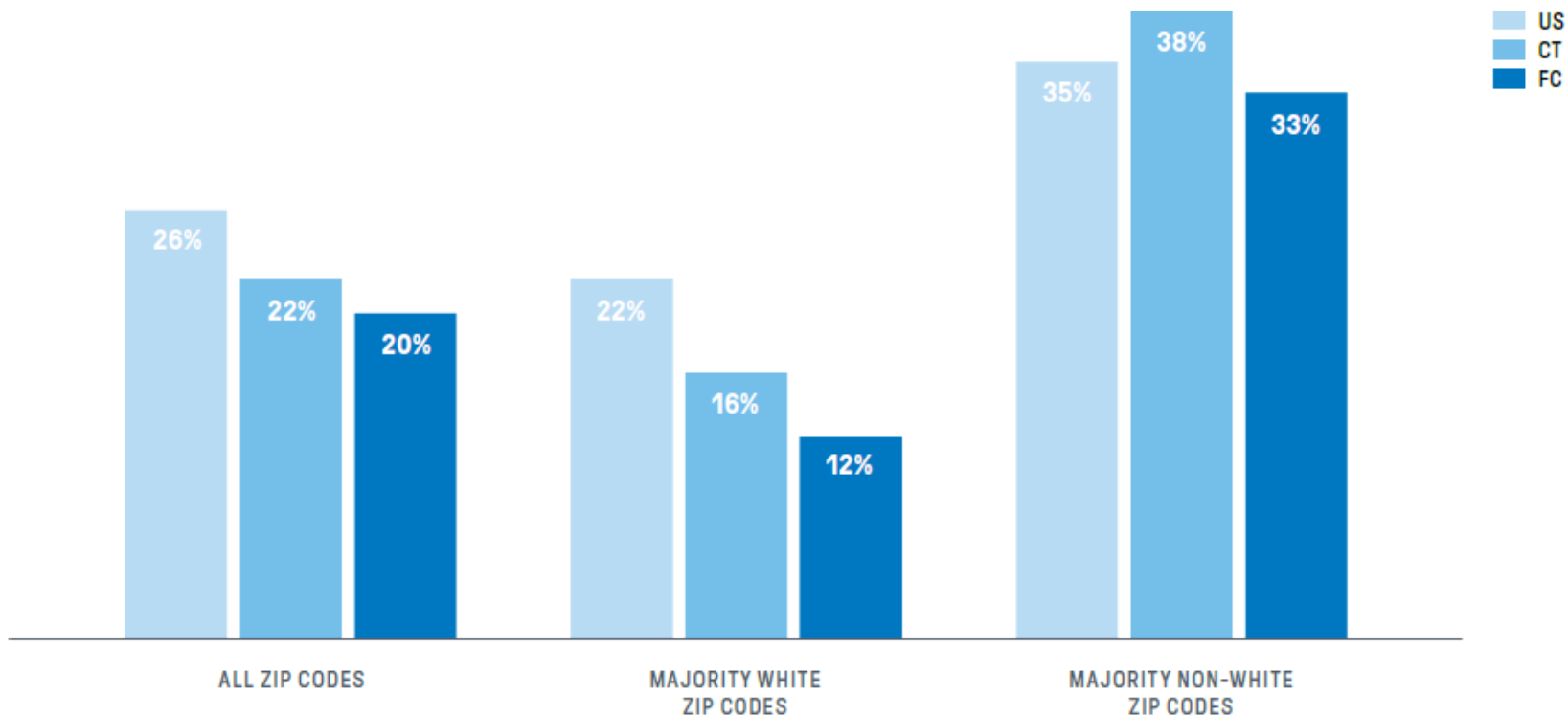


FIGURE 3E

## Residents of majority non-white neighborhoods are more likely to have debt in collections

SHARE OF RESIDENTS WITH DEBT IN COLLECTIONS BY MAJORITY RACE/ETHNICITY OF ZIP CODE, 2021



# POVERTY

TABLE 3A

## Poverty and low-income rates

POVERTY AND LOW-INCOME (<200% FPL) RATES BY AGE GROUP, FAIRFIELD COUNTY, 2020

LOCATION	POVERTY RATES				LOW-INCOME RATES			
	ALL AGES	AGES 0-5	AGES 0-17	AGES 65+	ALL AGES	AGES 0-5	AGES 0-17	AGES 65+
US	13%	19%	17%	9%	30%	41%	39%	27%
CT	10%	14%	13%	7%	22%	31%	29%	21%
<b>FC</b>	<b>9%</b>	<b>13%</b>	<b>12%</b>	<b>7%</b>	<b>21%</b>	<b>27%</b>	<b>26%</b>	<b>19%</b>
Bridgeport	23%	38%	34%	17%	45%	65%	61%	40%
Danbury	11%	14%	16%	8%	27%	39%	41%	22%
Fairfield	5%	3%	3%	4%	13%	8%	12%	14%
Greenwich	5%	4%	6%	5%	13%	11%	14%	12%
Norwalk	9%	10%	11%	9%	22%	29%	32%	21%
Stamford	9%	11%	14%	8%	24%	32%	34%	25%
Stratford	7%	9%	10%	7%	18%	25%	27%	19%
6 wealthiest FC towns	3%	2%	2%	3%	7%	4%	7%	9%
All other FC towns	4%	4%	5%	4%	11%	10%	12%	13%

23% →

5% →

# EDUCATION

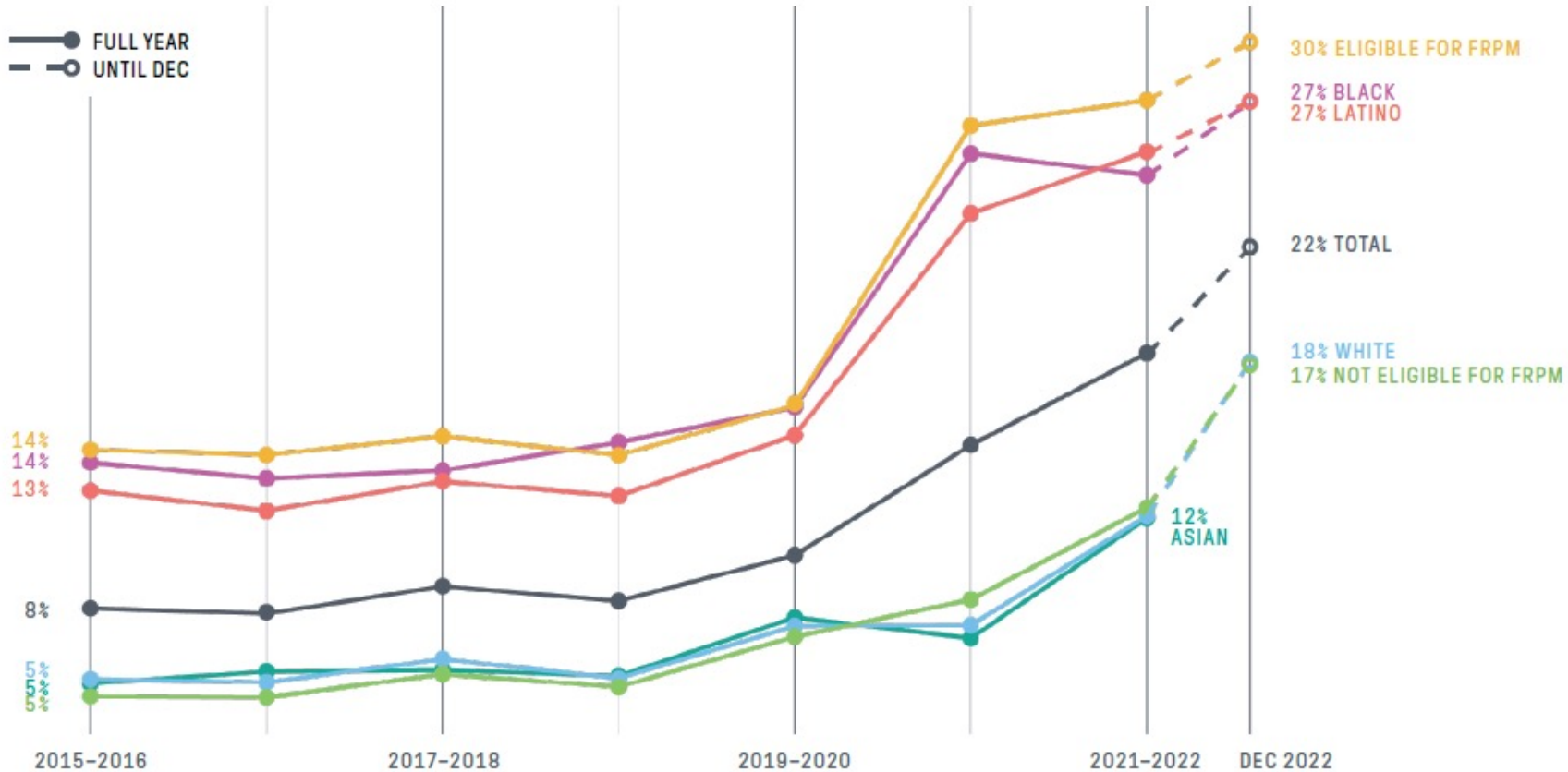


# CHRONIC ABSENTEEISM

FIGURE 5A

## Since the start of the COVID-19 pandemic, chronic absenteeism has skyrocketed

SHARE OF STUDENTS CHRONICALLY ABSENT BY RACE/ETHNICITY AND ELIGIBILITY FOR FREE/REDUCED PRICE MEALS, FAIRFIELD COUNTY PUBLIC SCHOOLS, 2015-16 TO 2020-23 SCHOOL YEARS



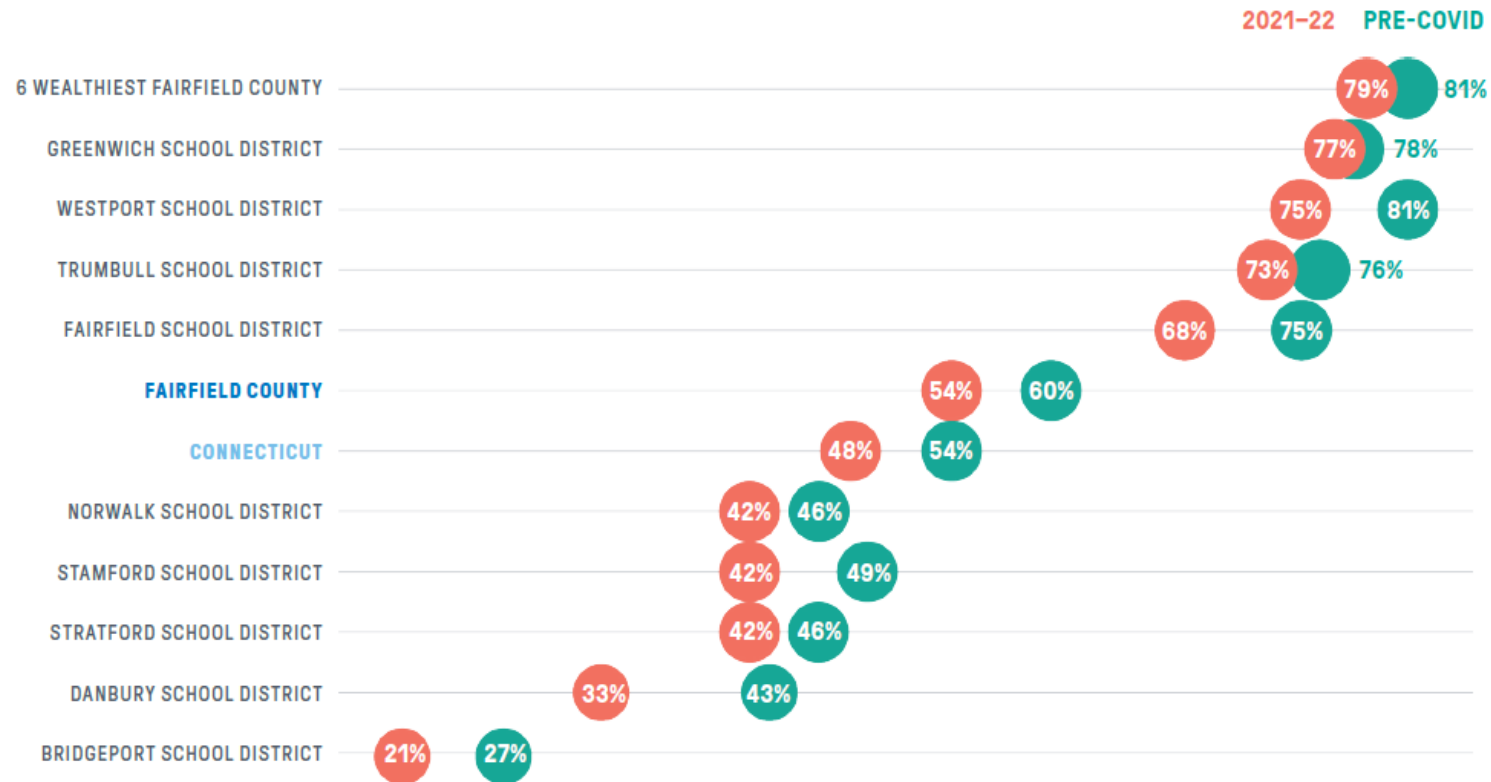
Source: [Fairfield County CWI 2023](#) (p. 41)

# STUDENT ACHIEVEMENT

FIGURE 5B

## Standardized test scores have dropped from pre-COVID averages

GRADE 8 ENGLISH/LANGUAGE ARTS SBAC PASS RATES, FAIRFIELD COUNTY BY DISTRICT, PRE-2020 AVERAGE VERSUS 2021-22 SCHOOL YEAR





# HIGH SCHOOL GRADUATION

TABLE 5A

## K-12 achievement

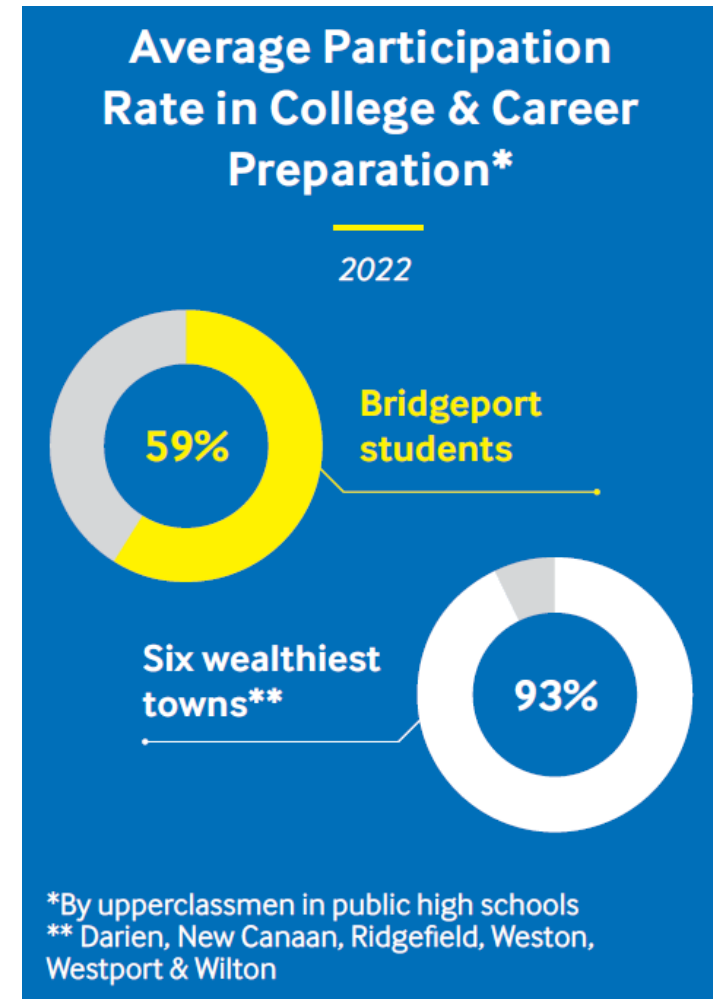
SELECTED ACADEMIC AND DISCIPLINARY OUTCOMES BY DISTRICT, WITH FAIRFIELD COUNTY STUDENTS BY RACE/ETHNICITY, ELIGIBILITY FOR FREE/REDUCED PRICE MEALS (FRPM), SPECIAL EDUCATION (SPED), AND ENGLISH LANGUAGE LEARNER STATUS (ELL), 2020-21 AND 2021-22 SCHOOL YEARS

LOCATION	GRADE 3 SBAC ELA PASS RATE *	SUSPENSIONS PER 1K STUDENTS *	GRADUATION RATE†
Connecticut	46%	68	90%
Fairfield County	52%	45	91%
BY DEMOGRAPHIC WITHIN FAIRFIELD COUNTY			
White	70%	24	96%
Black	24%	117	82%
Latino	28%	60	82%
Asian	48%	13	96%
FRPM	26%	85	82%
Not FRPM	57%	25	96%

\* 2021-22 school year † 2020-21 school year

## COLLEGE & CAREER READINESS

- Majority of 11<sup>th</sup> and 12<sup>th</sup> grade students are enrolled in at least 1 CCR course
  - Advanced Placement
  - International Baccalaureate
  - Technical education
  - Enrollment in local college
  - Internship
- We observe lower CCR participation in under-resourced school districts

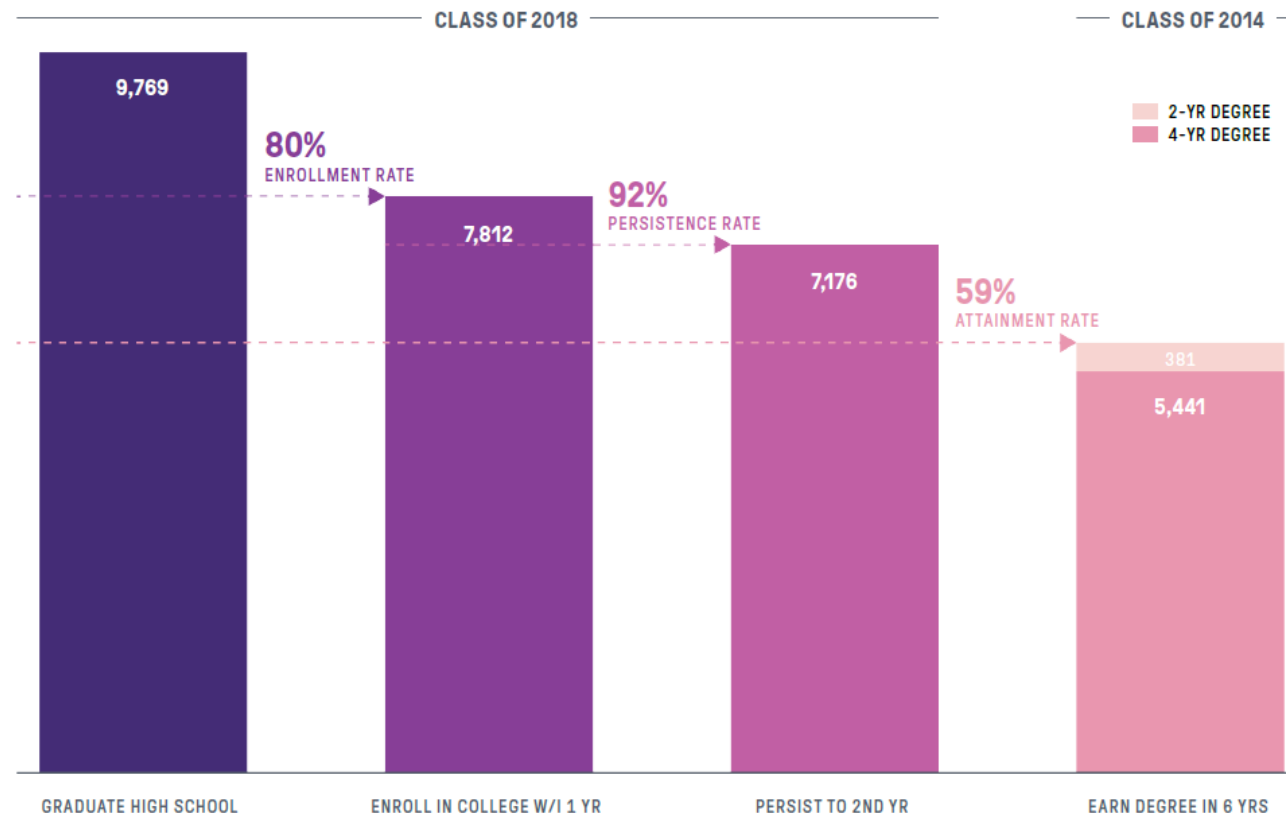


# COLLEGE ENROLLMENT & RETENTION

FIGURE 5C

## Six years after graduating high school, only 59 percent of Fairfield County public school students have a college degree

NUMBER AND PERCENTAGE OF STUDENTS ENROLLING IN, PERSISTING IN, AND GRADUATING FROM COLLEGE, FAIRFIELD COUNTY PUBLIC HIGH SCHOOL GRADUATES



# COLLEGE ENROLLMENT & RETENTION

## Rate of Graduating High School Students Earning a College Degree Within 6 Years

Class of 2014



20% Bridgeport students

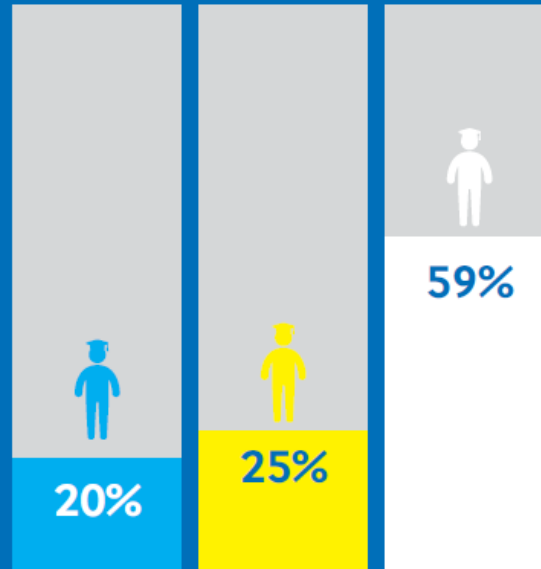
40% Danbury students

82% Six wealthiest towns \*\*

\*\* Darien, New Canaan, Ridgefield, Weston, Westport & Wilton

## Rate of Adults With a College Degree

2020



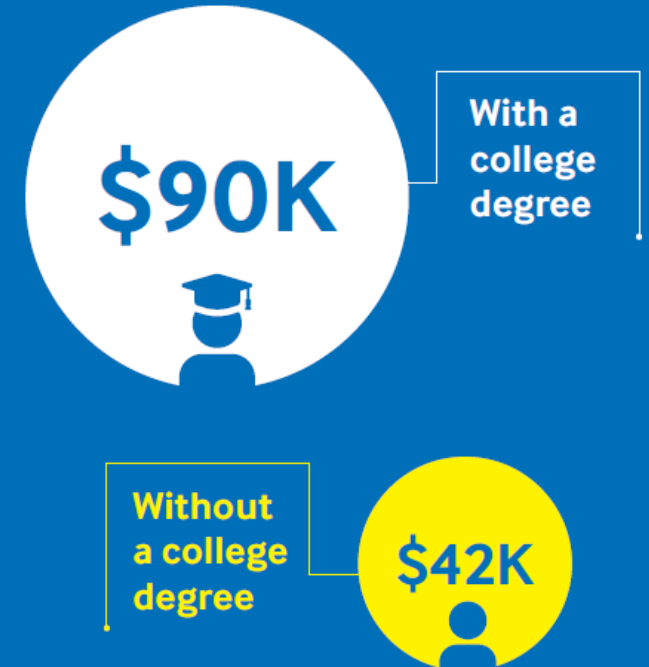
Latino adults

Black adults

White adults

## Median Income

2022



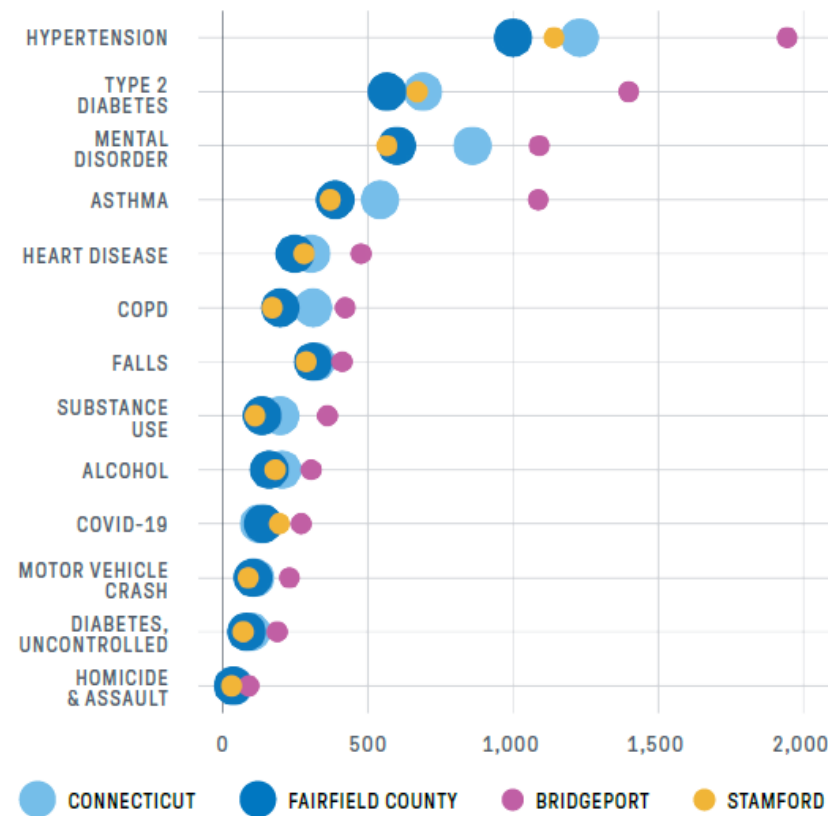
# HEALTH

# HOSPITAL ENCOUNTERS

FIGURE 7A

## Hospital encounter rates vary across the region

ANNUALIZED AGE-ADJUSTED HOSPITAL ENCOUNTER RATES PER 10,000 RESIDENTS, 2018–2021



# MATERNAL AND INFANT HEALTH

TABLE 7F

## Birth outcomes

### BIRTH OUTCOMES BY RACE/ETHNICITY OF PARENT, 2016–2018

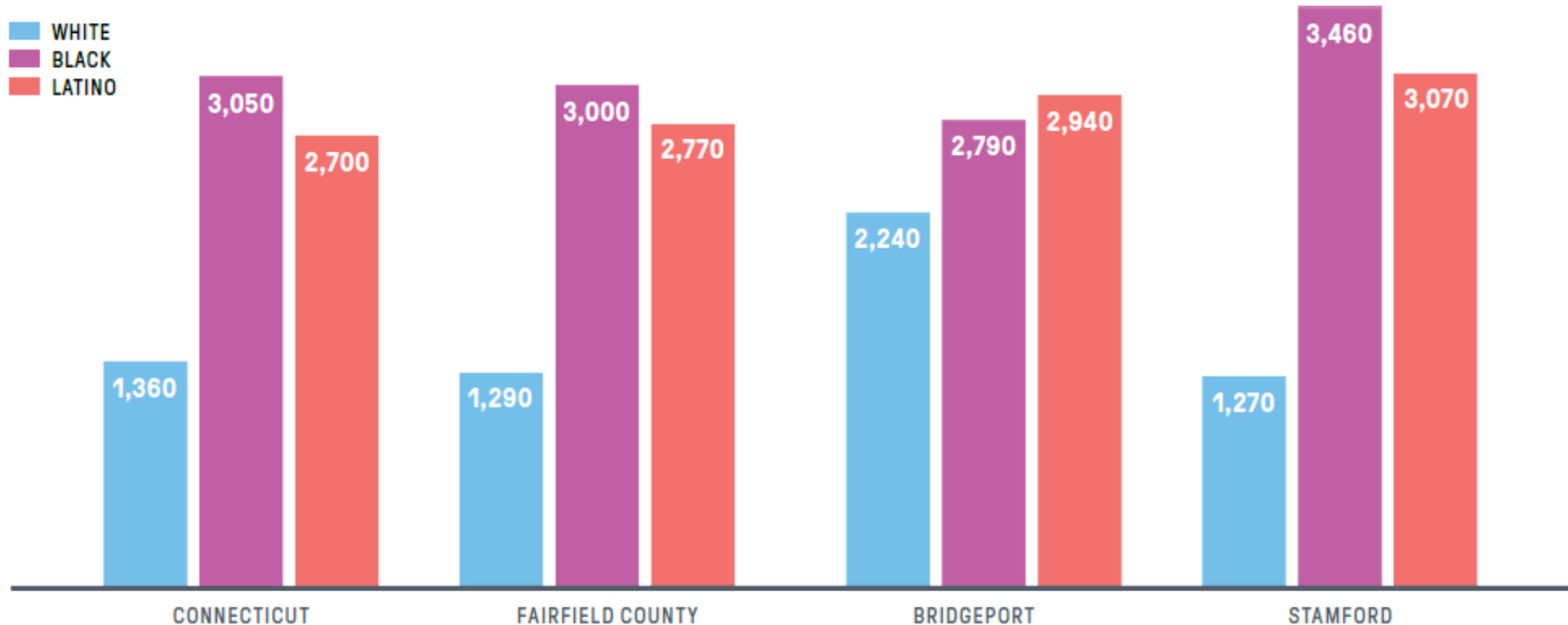
LOCATION	RACE/ETHNICITY OF PARENT	PERCENT OF BIRTHS WITH LATE OR NO PRENATAL CARE	PERCENT LOW BIRTH WEIGHT	INFANT MORTALITY RATE PER 1,000 LIVE BIRTHS
Connecticut	Total	3.4%	7.8%	4.61
Fairfield County	Total	4.1%	7.5%	3.96
	White	3.1%	6.0%	2.68
	Black	6.7%	13.0%	9.23
	Latina	4.6%	7.4%	4.23
	Puerto Rican	2.6%	10.3%	N/A
	Other Latina	5.2%	6.5%	N/A
	Asian	3.4%	7.7%	N/A

# COVID-19 MORTALITY

FIGURE 7D

## Mortality due to COVID-19 was higher for residents of color than white residents

ANNUALIZED, AGE ADJUSTED MORTALITY RATE PER 1 MILLION RESIDENTS FOR COVID-19, BY RACE/ETHNICITY, 2020-2021



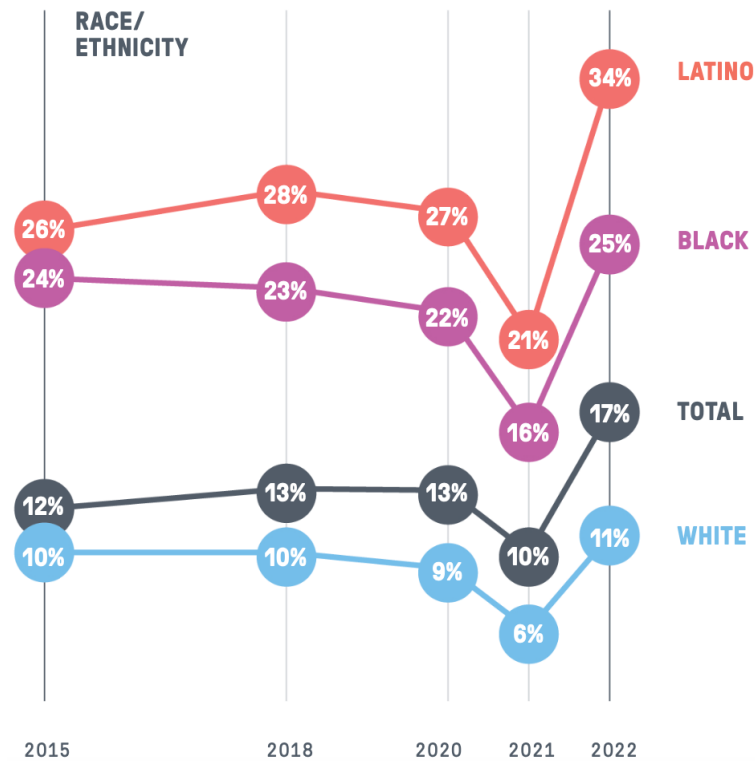


# FOOD INSECURITY

FIGURE 3C

## As pandemic relief programs fade, Black and Latino adults and adults who live with children are hit hard by food insecurity

SHARE OF ADULTS REPORTING FOOD INSECURITY BY RACE/ETHNICITY AND PRESENCE OF CHILDREN, CONNECTICUT, 2015-2022



## SUMMARY

- In the post-pandemic era, there are even larger equity wellbeing, and quality of life gaps—especially when data are disaggregated by geography, socioeconomic status and race/ethnicity.
- The challenges we face as a community are interrelated, our response requires a multidimensional systemic approach that includes public policy responses and reconstructive measures.
- These challenges transcend traditional ways of thinking and acting. Solutions to these challenges require cross collaboration between communities, sectors and stakeholders.

# NEXT STEPS AND RESOURCES

## How can you use the CWI?

### READ

- Download the report and dive into the sections about current issues facing our community that you care about most.

### REFLECT

- Reflect on the data.
- Consider your assumptions – have they shifted?
- Collect questions the data brings up.

### ENGAGE

- Develop and capture your ideas on addressing our community's challenges.
- Share and discuss the findings with your friends, colleagues, and elected officials.



### Building Tomorrow's Workforce: Equitable Education and Career Pathways for Opportunity Youth in Fairfield County

Presented by  
Fairfield County's Business Collaborative for Education Equity (BCEE)

With analysis on job availability and remuneration provided by McKinsey & Company and qualitative interview analysis by Philliber Research & Evaluation  
October 2023

To learn more about the BCEE, visit [www.fccfoundation.org/BCEE](http://www.fccfoundation.org/BCEE)

# WANT TO BE PART OF THE SOLUTION?

---



**Share with  
Others**



**Stay In Touch &  
Continue Learning**



**Make an  
Introduction**

# WANT TO BE PART OF THE SOLUTION?

---



## **Dr. Tanya A. Hills**

Director, Learning & Evaluation

Direct Phone: 203-750-3202

[THills@FCCFoundation.org](mailto:THills@FCCFoundation.org)

# REFLECTION



**Fairfield County's Community Foundation**

40 Richards Ave

Norwalk, CT 06854

Direct Phone/Fax 203-750-3200

[info@FCCFoundation.org](mailto:info@FCCFoundation.org)

**FCCFoundation.org**

[FCCFoundation.org/blog](http://FCCFoundation.org/blog)

[@FCCFoundation](#)

Fairfield County's Community Foundation